



Appendix A.2

## **SHALLOW WATER WITH 1 SMALL BOAT SOLUTION**

**( flow rate : 60 l/min )**

### **DELIVERY SCOPE of FREYLIT**

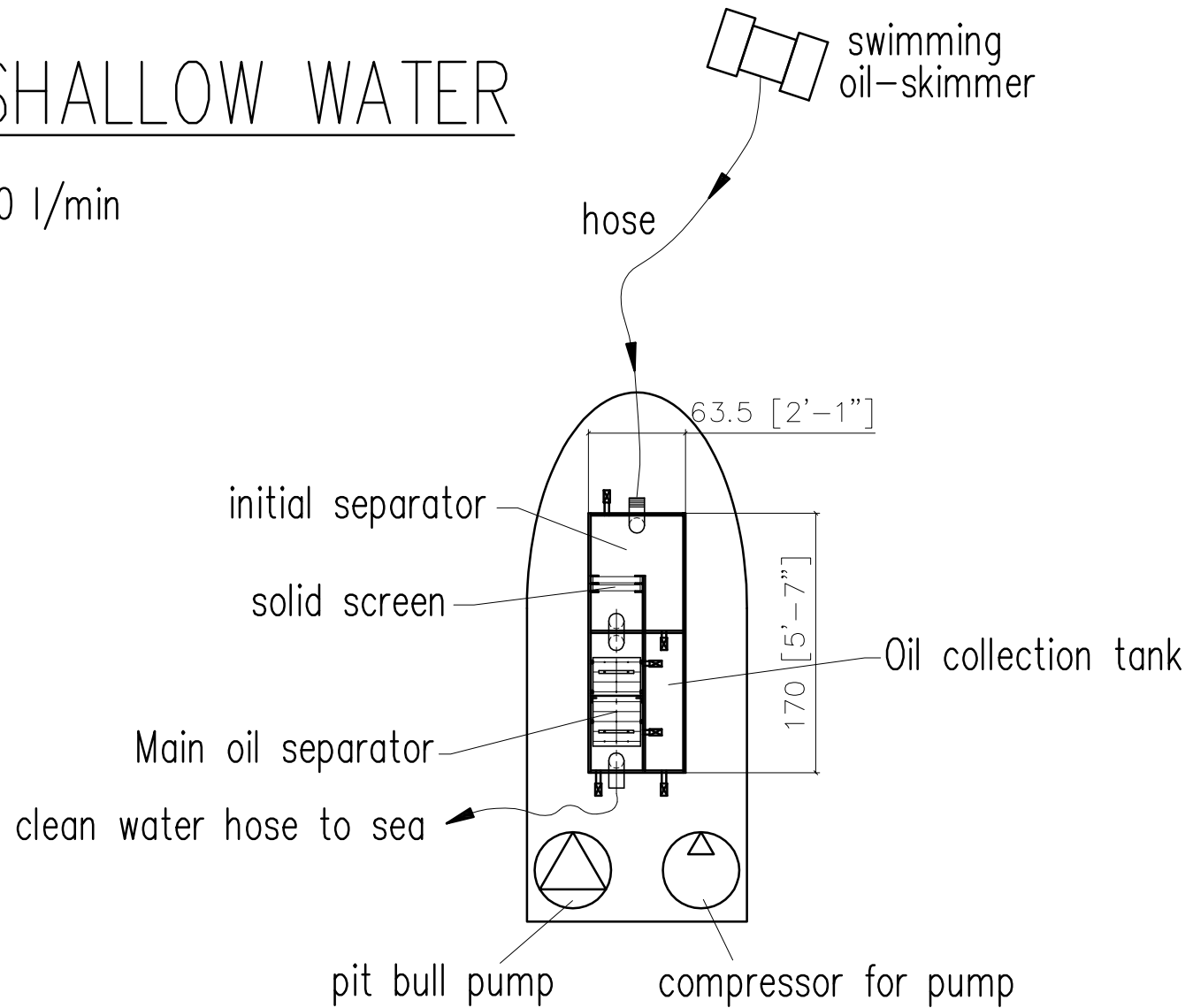
- 1) Delivery of one Mobile FREYLIT Mineral oil and Residual oil Separator Type : M+R 3 PSF ( material of container polypropylene )
- 2) Delivery of one FREYLIT oil alarm system which is installed inside the separator .  
If the oil layer in the separator reach an oil thickness of 15 cm an acoustic signal sounds .
- 3) Delivery of 3 ball valves which are installed inside the oil separator to release the oil from the separator into the oil collection tank .
- 4) Delivery of 2 pieces solid screens which are installed in the initial separator before the oil separator
- 5) Delivery of one Pit Bull Pump to pump the oil water mixture from the FREYLIT skimmer to the FREYLIT Mineral oil and Residual oil Separator
- 6) Dimensioning of an small compressor which power the pump. **Not supplied by FREYLIT**
- 7) Delivery of one FREYLIT floating Skimmer
- 8) Delivery of 10 meters hose which will be installed between Skimmer and the Pit Bull Pump
- 9) Delivery of 5 meters hose which will be installed between Pit Bull Pump and Mobile FREYLIT Mineral oil and Residual oil Separator
- 10) Delivery of 3 meters hose which will be installed on the outlet of the Mobile FREYLIT Mineral oil and Residual oil Separator to release the clean water with an maximum oil content of 5 ppm back into the sea.

### **DELIVERY SCOPE of CUSTOMER**

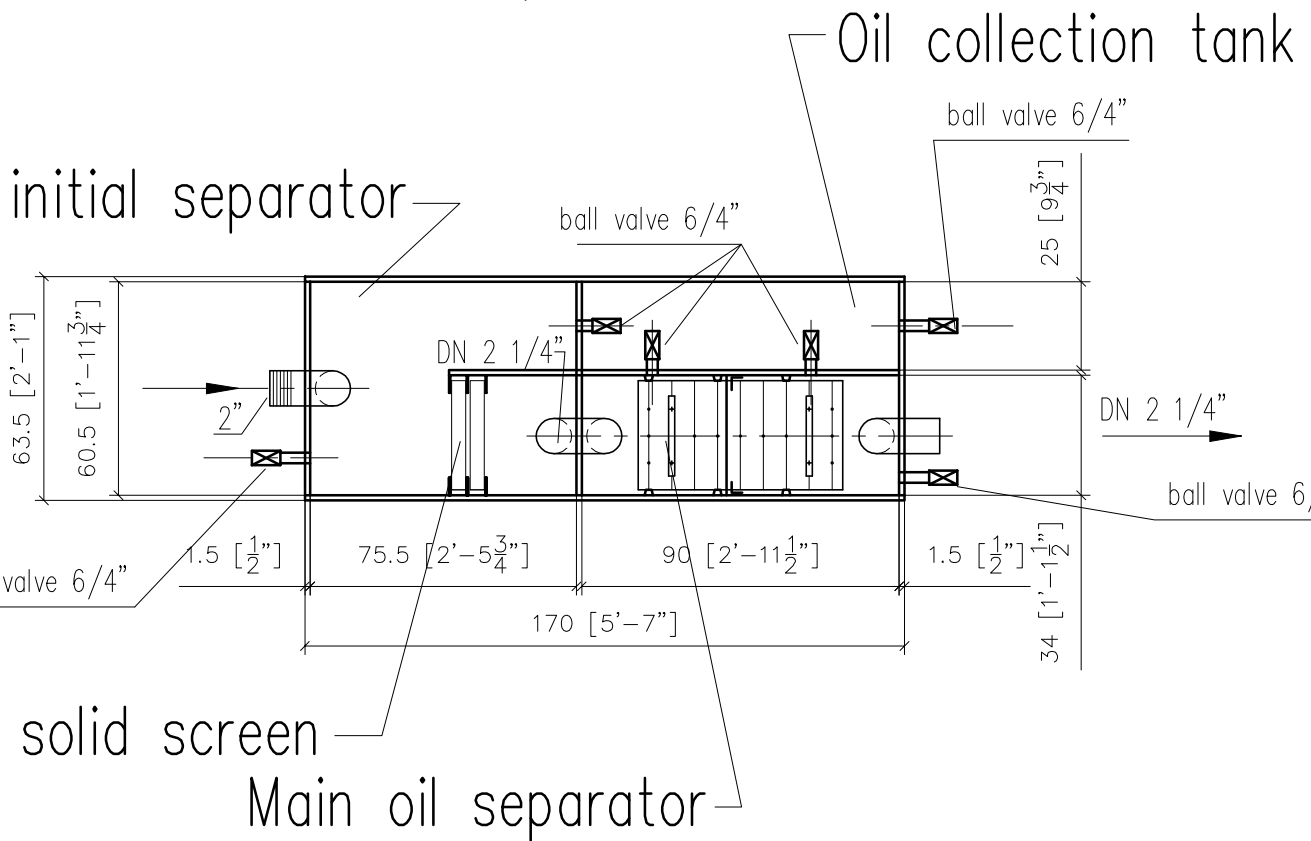
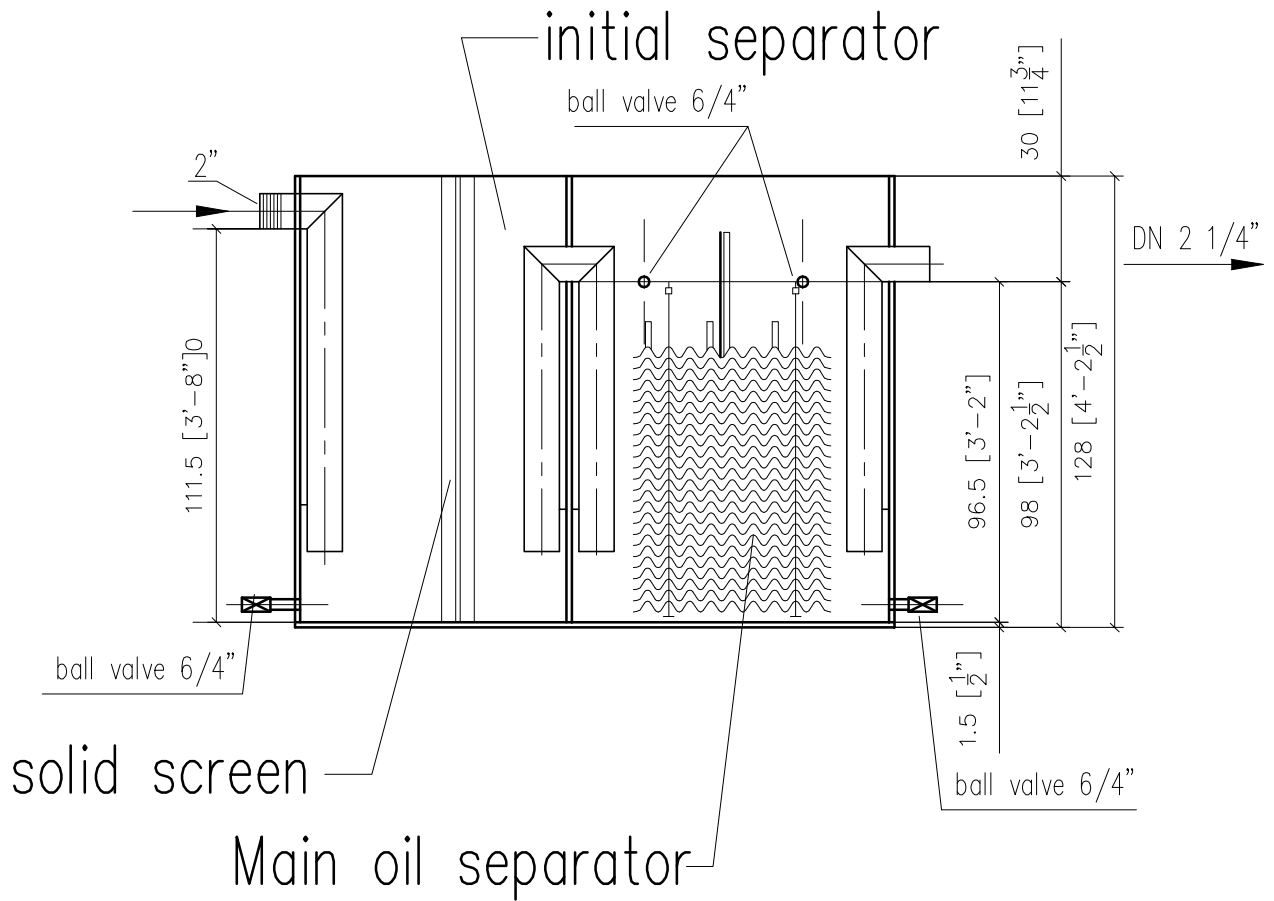
- 1) Delivery of a small boat for shallow water on which the following parts have to be installed :  
Mobile FREYLIT Mineral oil and Residual oil Separator, Pit Bull Pump,  
small air compressor
- 2) Delivery of an small air compressor according dimensioning of FREYLIT
- 3) Electrical Connection between the electrode from the oil alarm system and the battery of the boat ( 12 V)

# BOAT IN SHALLOW WATER

flow rate: 18 – 60 l/min



const.:	date:	name:	<b>FERREYUT AUSTRIA</b> Trademark
contr.:	21.10.2011	Meinecke	
scale:	<b>BOAT IN SHALLOW WATER</b>		drawing no.:
	<b>CONFIDENTIAL AND PROPRIETARY DRAWING.</b>		<b>OS SWB system</b>
	Ocean-faring ship for high volume, crude oil skimming separation and extraction Disaster Oil Spill Solutions.		modif.:
			date:



measurements in cm!

const.:	date: 25.10.2011	name: Meinecke		type:	18-60 l/min
contr.:				drawing no.:	
scale:	<b>MINERAL- and RESIDUAL OIL SEPARATOR</b> CONFIDENTIAL AND PROPRIETARY DRAWING. Ocean-faring ship for high volume, crude oil skimming separation and extraction Disaster Oil Spill Solutions.			modif.:	
				date:	